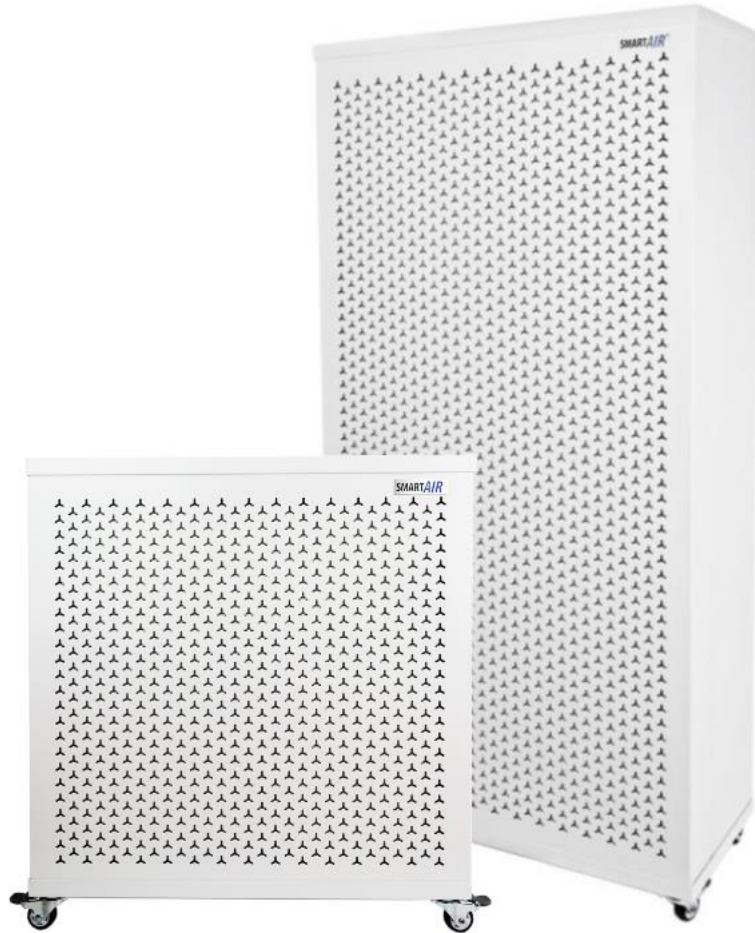




Blast / Blast Mini Manual



Contents

Instructions	3
Safety instructions	3
Guarantees and undertakings	4
Correct disposal of this product	4
Features	4
Blast / Blast Mini placement brackets	5
3 layers of filtration	6
Transport and unpackaging	6
How to use your Blast and Blast Mini.....	6
Cleaning your pre-filter	7
Replacing your HEPA H13 filter	7
How to change your HEPA	8
Technical specifications	8
Smart Air and the environment	9

Instructions

Safety instructions

Read and save these instructions to reduce the risk of fire, electric shock, or injury:

- Read all instructions before using appliance.
- Use this unit only in the manner intended by the manufacturer. If you have questions, contact the manufacturer.
- Before servicing or cleaning the unit, switch power off at service panel and lock the service disconnecting means to prevent power from being switched on accidentally. When the service disconnecting means cannot be locked, securely fasten a prominent warning device, such as a tag, to the service panel.
- For your safety, DO NOT
 - Run the cable under carpeting, cover with throw rugs, runners, or similar. Do not route cable under furniture or appliances. Arrange it away from traffic area and where it will not be tripped over.
 - Operate any appliance with a damaged cable or plug. Discard fan or return to an authorised service facility for examination and/or repair.
 - Place anything on top of the unit.
 - Attempt to repair or adjust any electrical or mechanical functions on this unit as this will void your warranty.
 - Use this fan with any solid-state speed control device.
- For installation, servicing, maintenance or filter replacement, the machine's power supply must be disconnected from the socket. Rotating parts do not stop immediately once power has been cut, or the machine has been switched off.
- If the air cleaner is used for purposes other than those set out in the user manual, or is handled otherwise than set out therein, Smart Air UK can accept no liability whatsoever for the consequences of said use/handling.
- Accessories, filters, spare parts, etc. must be approved by Smart Air UK.
- Do not cover inlets or outlets.
- Inserting or dropping objects through inlets or outlets may result in damages outside of the warranty.
- The Blast and Blast Mini must be used indoors only, including transportation as the wheels are designed for smooth indoor floor surfaces only
- The Blast and Blast Mini must be used only within the temperature range of 5 °C to 50 °C.
- The Blast and Blast Mini must not be exposed to water and be kept in an environment with humidity of less than 85%.
- The Blast and Blast Mini is not designed for dust extraction.
- Your Blast and Blast Mini is mechanical which means that, on power restoration after a power disruption, the fan automatically returns to its speed before the disruption.
- The wheels must be locked throughout operation.

Guarantees and undertakings

- The guarantee relates to full functionality as per the details in this user manual and covers motor faults for a period of **two years** from the delivery date. The guarantee covers the use as a floor mounted portable air cleaner, should this be fixed to a wall or ceiling, the guarantee doesn't cover the incorrect installation or any consequences thereof.
- The Smart Air portable air cleaners are mechanical and not having electronics allows us to keep the price down and reduce the number of faults, most of which tends to be with electronics.
- The motors in both the Blast and Blast Mini are equipped with a failsafe design, to prevent overheating. That means you can run your Blast and Blast Mini continuously, without issue. However, to prolong the lifespan of the motors, we advise that you occasionally turn off your motor, to allow it to cool. We generally recommend turning your air cleaner off after 12 hours to provide the longest lifespan for the motor. Should the equipment develop a fault, please contact your distributor: *Smart Air UK (trading name of Airbon Ltd), LS House, 95 Horseferry Road, London SW1P 2DX*

Correct disposal of this product

HEPA filter disposal guidelines vary based on the type of substances the filter is used to remove. When disposing of HEPA filters, individuals should adhere to the relevant disposal guidelines of the specific business, school or hospital.

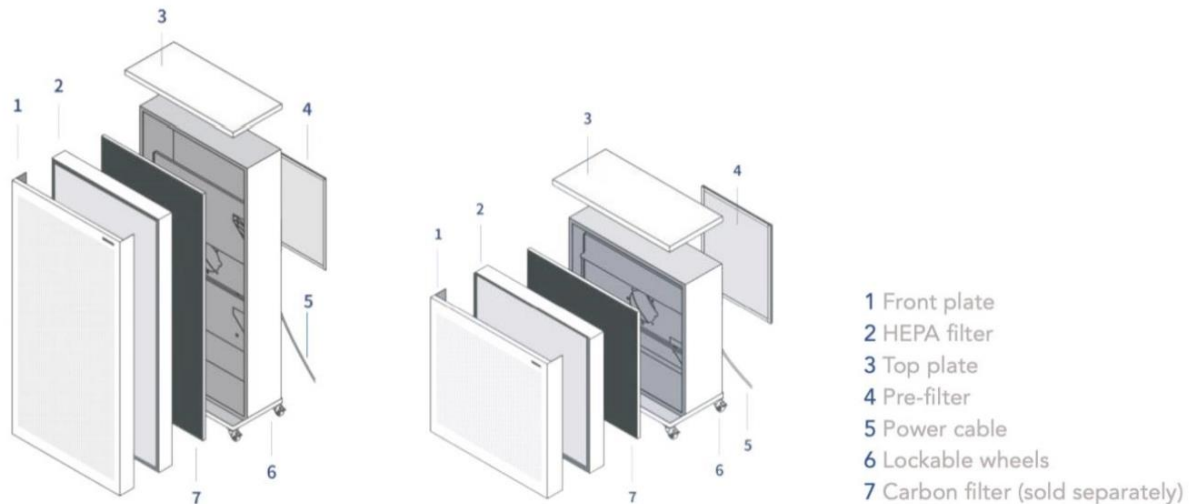
Procedure for the disposal of HEPA filters - General Waste

- Ensure that the area surrounding the air cleaner is free of open flames, liquids spillage, or other possible hazards.
- Ensure that the individual conducting the disposal is using masks, hand gloves, and any other protective equipment necessary.
- Insert old filter into the packaging of the new filter and dispose the used HEPA filter in accordance with the business, school, hospital safety guidelines for general waste.
- During this process, some dust might come out from the filters. Ensure that they are properly cleaned and disposed of.

Features

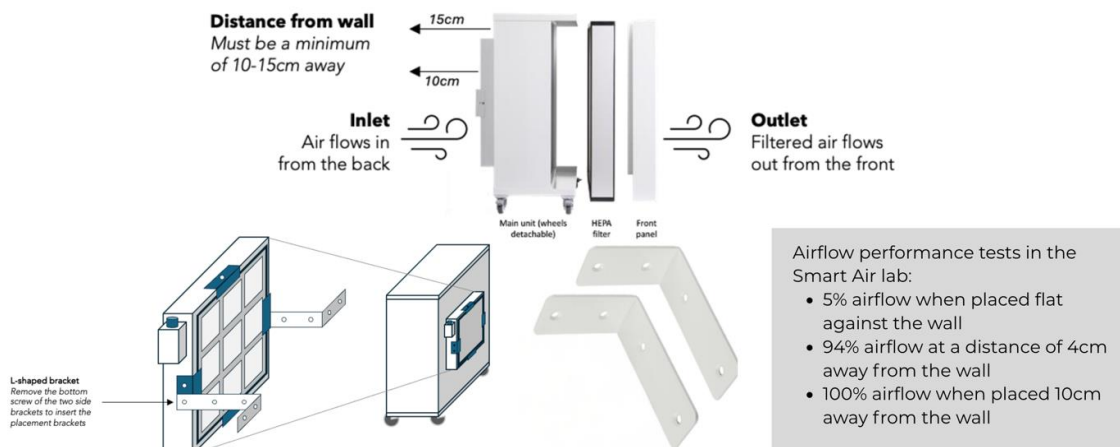
The Blast and Blast Mini are free-standing portable air cleaners in two sections. The sealed section houses the motor and fan and the section behind the removable front panel houses the HEPA H13 filter and optional carbon filter. The pre-filter is located on the outside at the back of the unit, making it easy to access and clean.

The unit is entirely constructed of stainless steel or painted steel plates making it readily recyclable.



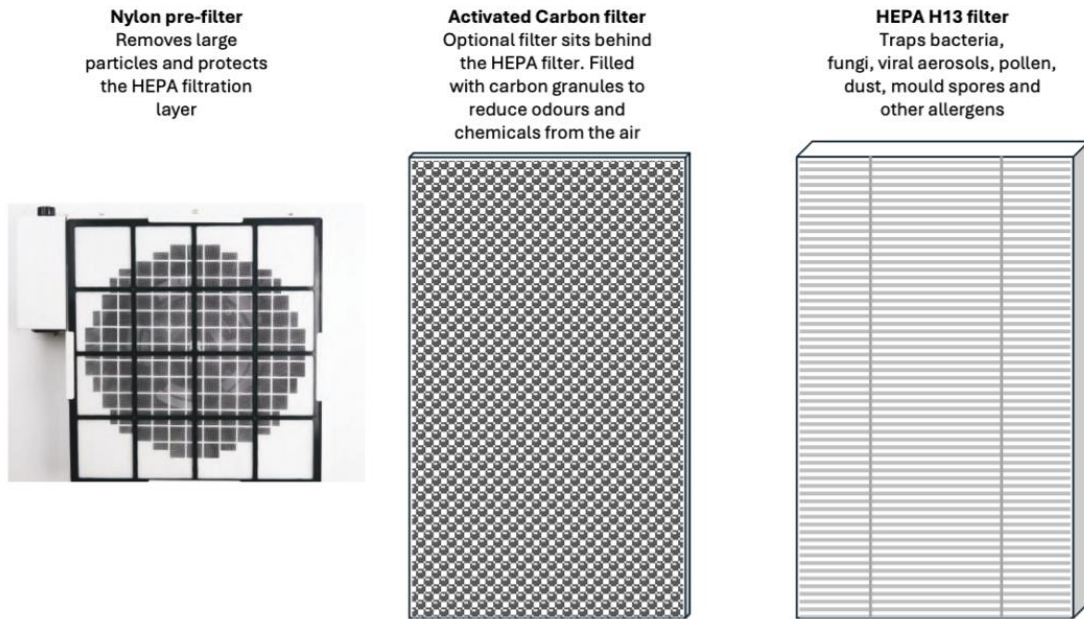
Blast / Blast Mini placement brackets

- Designed for easy installation, the placement brackets ensure the correct distance from the wall for 100% airflow efficiency. The brackets also come with screws for affixing to the wall for permanent placement.
- These brackets ensure the purifier is never backed up to the wall impeding airflow.
- Installing your Blast or Blast Mini placement bracket is quick and easy. Just follow these simple steps:
- Placement guidance: Remove the lower screws from the two side brackets of the pre-filter at the back. Align the long side (12.5 cm) of the bracket with the pre-filter (short side faces the wall) and replace the screw. The right-angle can be placed inwards or outwards, the illustration here shows outwards.



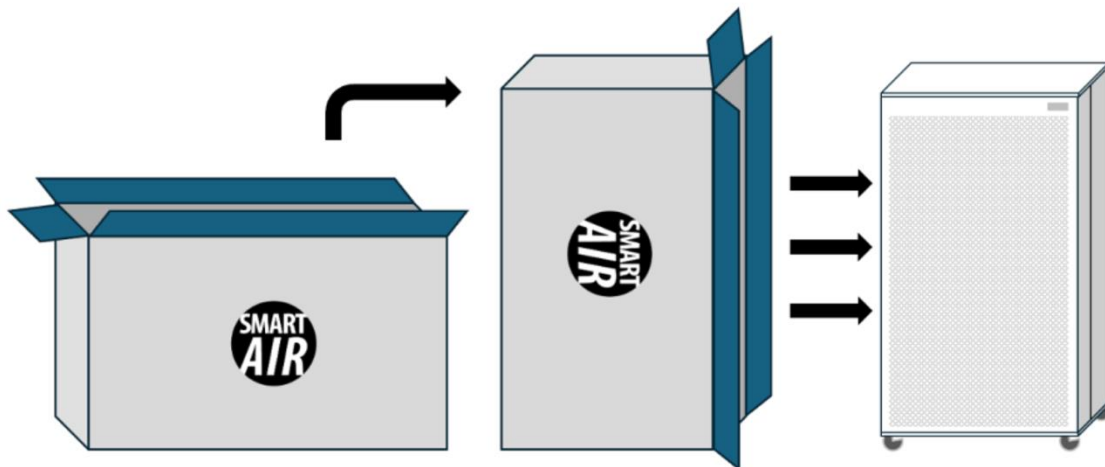
- **Fixing to the Wall:** Follow the instructions above to attach the bracket to the unit. Push unit against the wall and use a pencil to mark the drill holes. Secure to the wall using the screws provided. Check the brackets are firmly attached for stability.

3 layers of filtration



Transport and unpackaging

- Both the Blast and Blast Mini are large, heavy items so please take care when unboxing. Both boxes should be delivered on its side. To remove, open the top flaps and flip the box to the right (see diagram).
- Check that the product has not been damaged during transport. Report any transport damage to the carrier and ensure you keep the box until you have confirmed the delivery is complete.



How to use your Blast and Blast Mini

1. Your Blast and Blast Mini comes with a detachable cable. Plug the short end at the back near the pre-filter and plug the other end into a wall socket.

2. We kept the Blast and Blast Mini's speed control simple. It has one dial with 3 settings: 0 is off and turning it clockwise ramps up to maximum clean air.



Cleaning your pre-filter

Cleaning the pre-filter will extend the lifespan of the HEPA filter. Here's how:



- Unscrew the top screw using a screwdriver
- Slide the pre-filter up and out. You can wash it with a damp cloth or water. Make sure it's dry before putting it back.

Replacing your HEPA H13 filter

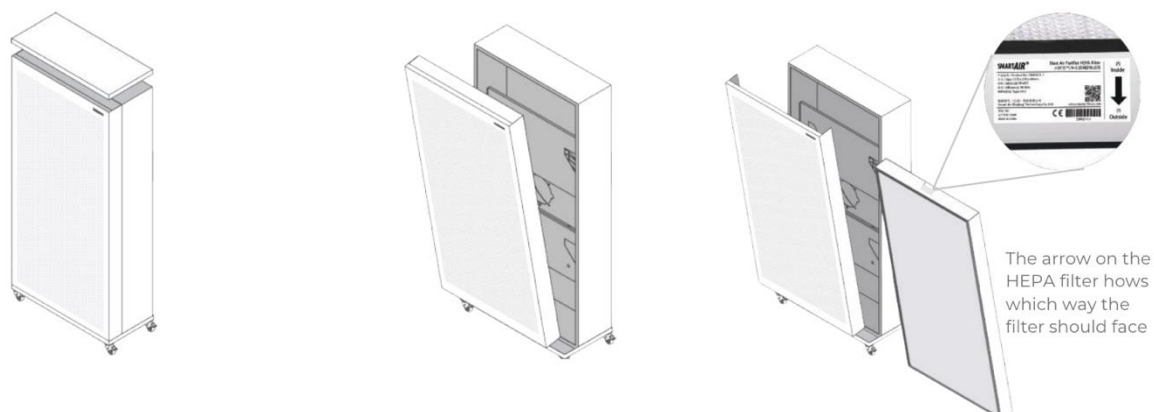
HEPA lifespan is based on annual UK air quality index (from W.H.O.). Use our calculator at smartairfilters.com/hepa-lifespan for a more accurate lifespan.

- Blast: **8100 hours** (5.32 school years*)
- Blast Mini: **4850 hours** (3.19 school years*)

** Based on running your unit for 8 hours a day, 190 days a year. We recommend a timer switch for this*

⚠ Remember to remove the power cable before removing or washing the pre-filter or opening up your Blast/Blast Mini!

How to change your HEPA



Technical specifications

	<u>Blast Mini Mk II</u>	<u>Blast Mk II</u>
Speed	1 - 2 - 3	1 - 2 - 3
CADR (m³/h)	340 - 450 - 740	450 - 680 - 950
Noise (dBA)	36 - 43 - 49	29 - 37 - 43
Power (W)	49 - 82 - 122	48 - 81 - 118
Coverage (m²)	48 - 63 - 85	74 - 99 - 130
HEPA lifespan (months)*	13 (UK: 20)	22 (UK: 33)
Dimensions L x W x H (cm)	57.5 x 33 x 63	57.5 x 33 x 123
Purifier dimensions (w x d x h) and weight	575 x 330 x 630mm 21.25 kg	573 x 330 x 1230mm 31.25kg
Box dimensions and weight	640 x 375 x 670mm 25.2 kg	635 x 365 x 1265mm 37.45 kg
Cable length	1.5m	1.5m
Warranty	2 years	
Filter	HEPA H13 (carbon optional)	
Power supply	220 - 240V/50-60Hz	
Safety certifications	CE Certified (LVD/EMC/RoHS) CQC GB/T 18801-2015 Certified	

Smart Air and the environment

We designed our Blast and Blast Mini units with lead-free components and the outer casing in high-quality steel rather than plastic. Because these can be recycled, used models must always be sent to a recycling station for correct recycling and/or disposal of parts and components.

Motors are usually stress tested for 10,000 hours. We have a Blast unit in our Philippines office that has been running for 6+ years (24 hours a day, 7 days a week) with just one capacitor change. It has just had a second capacitor change and it is still going strong.

- Product Sustainability: Reduction of plastic packaging and responsible manufacturing processes
- 98% plastic-free packaging achieved in 2023 across product lines
- 50L of plastic packaging eliminated per Blast air purifier
- 99% of Sqair air purifier packaging is plastic-free
- 52 leading product certifications achieved, ensuring environmental responsibility
- 67% of supply chain partners are ISO 14001 certified, demonstrating their commitment to environmental management
- 100% of supply chain partners are ISO 9001 certified, ensuring quality and efficiency