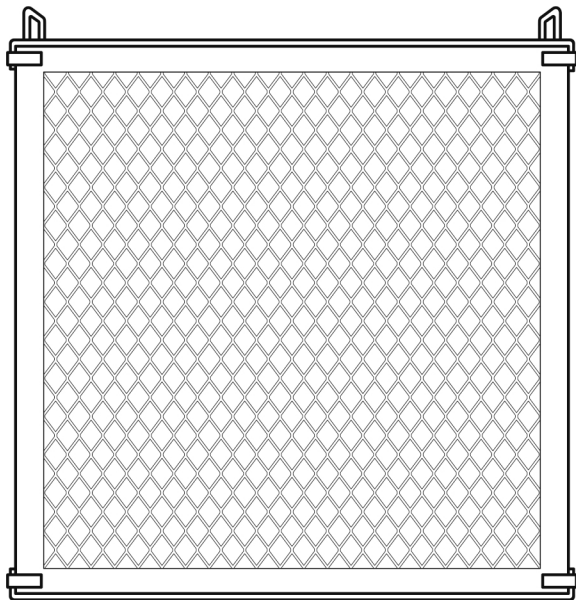




SA700 Air Purifier



Freedom to Breathe Clean Air.

READ AND SAVE THESE INSTRUCTIONS

WARNING – TO REDUCE THE RISK OF FIRE, ELECTRIC SHOCK, OR INJURY TO PERONS, OBSERVE THE FOLLOWING:

- Read all instructions before using appliance.
- Use this unit only in the manner intended by the manufacturer. If you have questions, contact the manufacturer.
- The product is only to be used with the power supply unit provided with the appliance.
- Prior to cleaning or other maintenance, the appliance must be disconnected from the supply mains.
- To protect against electrical hazards, DO NOT immerse it in water or other liquids. Do not use near wet areas.
- Always unplug the air purifier before moving it. Change filters or clean the air purifier when it is not in use. Be sure to pull the plug and not the cord.
- NEVER drop or insert any object into any openings of this unit.
- DO NOT run cord under carpeting. DO NOT cover cord with throw rugs, runners, or similar coverings. DO NOT route cord under furniture or appliances. Arrange cord away from traffic area and where it will not be tripped over.
- DO NOT operate any appliance with a damaged cord or plug. If the cord or plug is damaged, the appliance must be returned to an authorised service facility for examination and/or repair.
- Use appliance only for intended household use as described in this manual. Any other use not recommended by the manufacturer may cause fire, electric shock or injury to persons.
- DO NOT place anything on top of unit.
- DO NOT attempt to repair or adjust any electrical or mechanical functions on this unit. Doing so will void your warranty. The inside of the unit contains no user serviceable parts. All servicing should be performed by qualified personnel only.
- Always turn off the unit before unplugging it to prevent the risk of electric shock
- **WARNING:** To reduce the risk of fire or electric shock, do not use this fan with any solid-state speed control device.

- This appliance can be used by children aged from 8 years and above and persons with reduced physical, sensory or mental capabilities or lack of experience and knowledge if they have been given supervision or instruction concerning use of the appliance in a safe way and understand the hazards involved. Children shall not play with the appliance. Cleaning and user maintenance shall not be made by children without supervision.
- Bracket Installation: If the optional mounting bracket is to be installed, please refer to the "SA700 Air Purifier Mounting Bracket Installation Guide" for detailed installation instructions.



Correct Disposal of This Product

This marking indicates that this product should not be disposed with other household wastes throughout the EU. To prevent possible harm to the environment or human health from uncontrolled waste disposal, recycle it responsibly to promote the sustainable reuse of material resources.

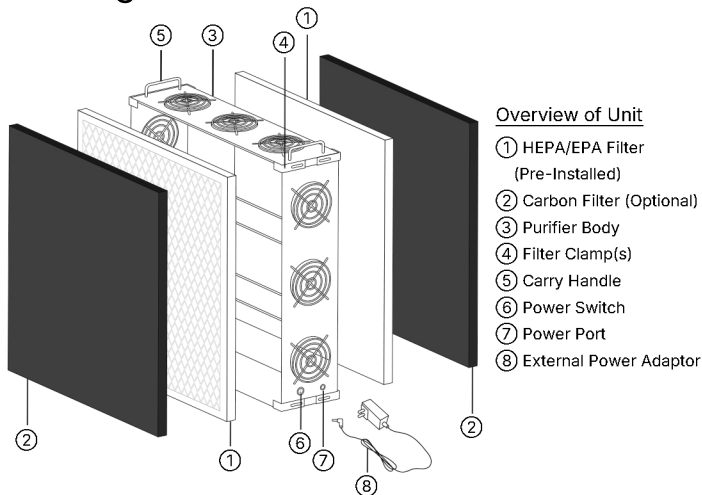
To return your used device, please use the return and collection systems available in your country or contact the retailer where the product was purchased. They can take this product for environmentally safe recycling.

High-Performance Air Purification

Thank you for choosing the SA700 Air Purifier!

The SA700 is designed to provide safe, clean air for large indoor spaces like homes and commercial spaces. Its multi-fan airflow design ensures high filtration efficiency (CADR) while operating quietly for a comfortable environment.

Getting To Know Your SA700



About Smart Air

Smart Air is a clean air social enterprise and certified B Corp dedicated to giving people and the planet the freedom to breathe clean air through open-source knowledge on air quality and reliable clean air tools.

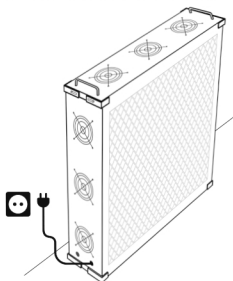


Turning On Your SA700

Follow these steps to start breathing cool, clean air with your SA700:

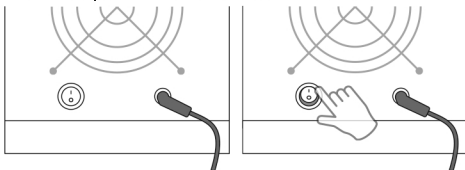
Step 1: Take the SA700 out of the box and remove all outer packaging.

Step 2: Place the SA700 on a firm, level surface and connect the power cord to the unit and an AC outlet.



Air enters the air purifier from the front and back. For proper air flow, ensure the inlets are located at least 30cm (1 ft) from any wall or item of furniture.

Step 3: Press the power switch to turn on the unit.



Product Information v1.1

Product No.: SA700 (E11)
Dimensions: 650mm x 176mm x 682mm
Power: 12 W
SA700 Input: 12 V DC
Adaptor Input: 100-240 V ~ 50/60 Hz
Adaptor Output: 12 V DC
Filter Type: E11
CADR: 720 m³/hr
Noise: 42 dB(A) *Sound Pressure Level
53 dB(A) *Acoustic Power Level
Recommended Coverage Area: 46-78 m²
Material: Metal
Net Weight: 6.7 kg
Created in China

Product No.: SA700 (H13)
Dimensions: 650mm x 176mm x 682mm
Power: 12 W
SA700 Input: 12 V DC
Adaptor Input: 100-240 V ~ 50/60 Hz
Adaptor Output: 12 V DC
Filter Type: H13
CADR: 490 m³/hr
Noise: 42 dB(A) *Sound Pressure Level
53 dB(A) *Acoustic Power Level
Recommended Coverage Area: 34-60 m²
Material: Metal
Net Weight: 6.7 kg
Created in China

Cleaning & Maintaining Your SA700

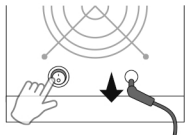
It is recommended to clean and maintain the SA700 once every 3 months. Disconnect the power, wipe the body with a dry cloth.

- HEPA/EPA and carbon filters cannot be washed and require regular replacement.
- Do not disassemble the device to clean the motor(s).

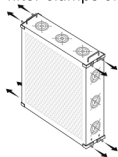
Replacing The Filters

We recommend replacing the HEPA/EPA Filter in the SA700 every 7 to 13 months. Replacement frequency depends on indoor air quality and usage.

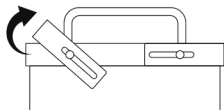
1. Turn off and unplug the unit.



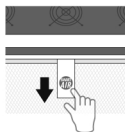
2. Using a screwdriver, loosen the 4 screws securing the filter clamps on each side.



3. Slide the filter clamp(s) outwards to release the filters.



4. Pull the tab on the the filters and remove them from the unit.

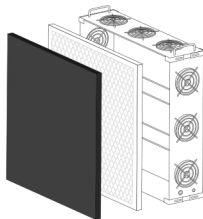
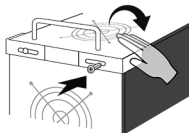


5. Remove the packaging from the new filters.



6. Insert the new filters,
- Ensure the arrows point towards the interior of the unit.
- Install the HEPA/EPA filter first, followed by the carbon filter (if applicable).

7. Slide the filter clamp(s) back into position, then tighten all screws securely.



Want to learn more about
Smart Air products?

Feel free to scan the QR code!



smartairfilters.com